



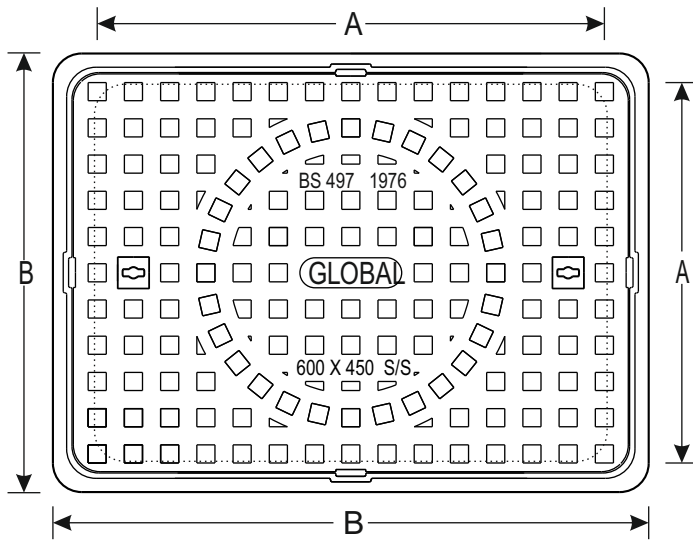
# GLOBAL

## PRODUCTS SUPPLY COMPANY

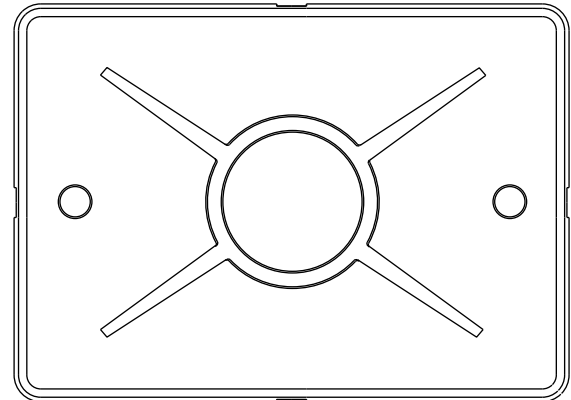
Paramount Quality since 1999

### CAST IRON RECTANGULAR TYPE MANHOLE COVER & FRAME

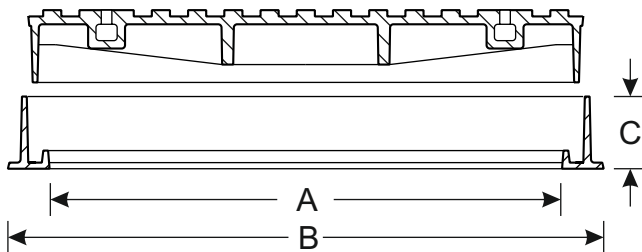
Light Duty As Per BS 497/1976  
Test Load : 10KN - Block dia. 300mm.



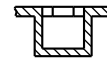
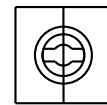
FRONT VIEW



BOTTOM VIEW OF COVER



SECTIONAL VIEW OF COVER & FRAME



KEY-HOLE SECTION

TOLERANCE:

On Dimension :  $\pm 3$  mm.

On Weight :  $\pm 5$  %

Sr. No.	B.S. Ref.	Clear opening of Frame (mm.) A x A	Over base of Frame (mm.) B x B	Height (mm.) C	Weight each (Kgs.)	TYPE
50	MC1 60/45	600 x 450	690 X 530	40	25 Kgs	Single Seal Rectangular Cover & Frame L/D Gr. C
51	MC1 60/45	600 x 450	710 X 560	42	32 Kgs	Single Seal Rectangular Cover & Frame L/D Gr. C
52	MC1 60/45	600 x 450	710 X 560	42	50 Kgs	Double Seal Rectangular Cover & Frame L/D Gr. C
53	MC1 90/45	900 x 450	1000 X 550	65	75 Kgs	Single Seal Rectangular Cover & Frame L/D Gr. C
54	MC1 90/60	900 x 600	1000 X 700	65	85 Kgs	Single Seal Rectangular Cover & Frame L/D Gr. C